

**STANDARD ARRIVAL CHART
INSTRUMENT(STAR)**

TRANSITION ALT 14 000
TRANSITION LVL FL 140

DAEGU APP 135.9 346.3
DAEGU TWR 126.2 236.6
365.0

DAEGU/Daegu Intl(RKTN)
RWY 13R/L
RNAV YAWAN 1

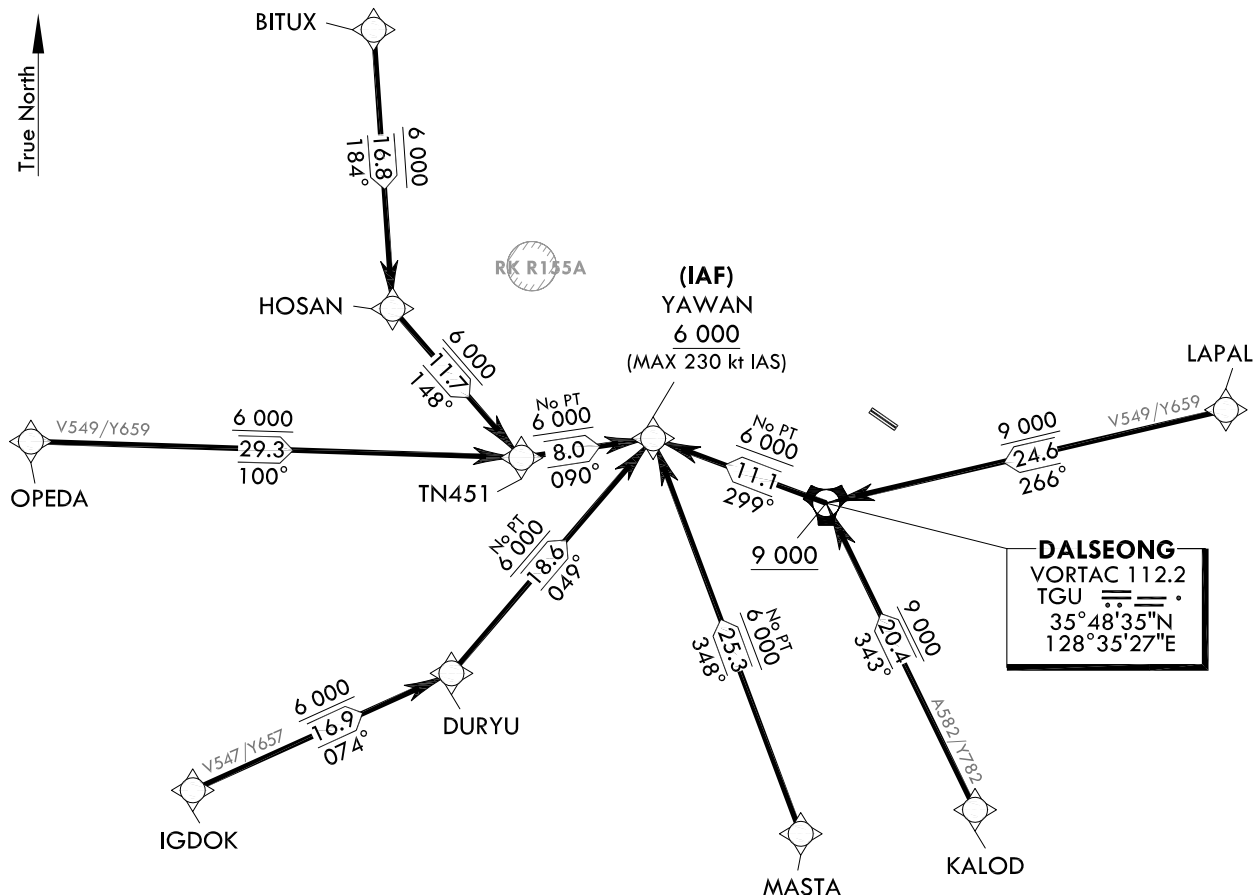
Note : Arrival under U.S. TERPS.

ELEV, ALT IN FEET

DIST IN NM

BRG ARE MAG

VAR 9° W



GNSS and RADAR required.

NOTE

1. RNAV 1.0 required.
2. DME/DME/IRU N/A.

NOT TO SCALE

ARRIVAL ROUTE DESCRIPTION

LANDING RUNWAY 13R/L : Expect RNP approach following transition routes.

The following are transition routes.

BITUX Transition : From BITUX on track 184° to HOSAN and track 148° to TN451 and track 090° to cross YAWAN at or above 6 000 ft.

OPEDA Transition : From OPEDA on track 100° to TN451 and track 090° to cross YAWAN at or above 6 000 ft.

IGDOK Transition : From IGDOK on track 074° to DURYU and track 049° to cross YAWAN at or above 6 000 ft.

MASTA Transition : From MASTA on track 348° to cross YAWAN at or above 6 000 ft.

KALOD Transition : From KALOD on track 343° to cross TGU(VORTAC) at or above 9 000 ft, then on track 299° to cross YAWAN at or above 6 000 ft.

LAPAL Transition : From LAPAL on track 266° to cross TGU(VORTAC) at or above 9 000 ft, then on track 299° to cross YAWAN at or above 6 000 ft.

Change : Establishment of standard instrument arrival procedure for RWY 13R/L.

DAEGU/Daegu Intl(RKTN)
RWY 13R/L
RNAV YAWAN 1

AERONAUTICAL DATA TABULATION

Standard Instrument Arrival Procedure Coding Tables

RNAV YAWAN 1 - BITUX Transition

Serial Number	Path Descriptor	Waypoint Identifier	Fly-over	Course/Track °M(°T)	Distance (NM)	Turn Direction	Altitude (ft)	Speed (kt)	Coordinates	VPA/RDH	Navigation Specification	Remarks
001	IF	BITUX	-	-	-	-	-	-	36°16'44.9"N 128°01'47.9"E	-	RNAV 1	-
002	TF	HOSAN	-	184 (175.5)	16.8	-	+6 000	-	36°00'00.7"N 128°03'25.6"E	-	RNAV 1	-
003	TF	TN451	-	148 (138.8)	11.7	-	+6 000	-	35°51'11.1"N 128°12'54.5"E	-	RNAV 1	-
004	TF	YAWAN	-	090 (081.1)	8.0	-	+6 000	-230	35°52'24.8"N 128°22'38.0"E	-	RNAV 1	IAF

RNAV YAWAN 1 - OPEDA Transition

Serial Number	Path Descriptor	Waypoint Identifier	Fly-over	Course/Track °M(°T)	Distance (NM)	Turn Direction	Altitude (ft)	Speed (kt)	Coordinates	VPA/RDH	Navigation Specification	Remarks
001	IF	OPEDA	-	-	-	-	-	-	35°51'48.5"N 127°36'52.0"E	-	RNAV 1	-
002	TF	TN451	-	100 (091.0)	29.3	-	+6 000	-	35°51'11.1"N 128°12'54.5"E	-	RNAV 1	-
003	TF	YAWAN	-	090 (081.1)	8.0	-	+6 000	-230	35°52'24.8"N 128°22'38.0"E	-	RNAV 1	IAF

RNAV YAWAN 1 - IGDOK Transition

Serial Number	Path Descriptor	Waypoint Identifier	Fly-over	Course/Track °M(°T)	Distance (NM)	Turn Direction	Altitude (ft)	Speed (kt)	Coordinates	VPA/RDH	Navigation Specification	Remarks
001	IF	IGDOK	-	-	-	-	-	-	35°31'03.6"N 127°49'06.6"E	-	RNAV 1	-
002	TF	DURYU	-	074 (064.9)	16.9	-	+6 000	-	35°38'13.0"N 128°07'54.2"E	-	RNAV 1	-
003	TF	YAWAN	-	049 (040.2)	18.6	-	+6 000	-230	35°52'24.8"N 128°22'38.0"E	-	RNAV 1	IAF

Change : Establishment of standard instrument arrival procedure for RWY 13R/L.

Standard Instrument Arrival Procedure Coding Tables

RNAV YAWAN 1 - MASTA Transition

Serial Number	Path Descriptor	Waypoint Identifier	Fly-over	Course/Track °M(°T)	Distance (NM)	Turn Direction	Altitude (ft)	Speed (kt)	Coordinates	VPA/ RDH	Navigation Specification	Remarks
001	IF	MASTA	-	-	-	-	-	-	35°28'47.0"N 128°33'39.6"E	-	RNAV 1	-
002	TF	YAWAN	-	348 (339.2)	25.3	-	+6 000	-230	35°52'24.8"N 128°22'38.0"E	-	RNAV 1	IAF

RNAV YAWAN 1 - KALOD Transition

Serial Number	Path Descriptor	Waypoint Identifier	Fly-over	Course/Track °M(°T)	Distance (NM)	Turn Direction	Altitude (ft)	Speed (kt)	Coordinates	VPA/ RDH	Navigation Specification	Remarks
001	IF	KALOD	-	-	-	-	-	-	35°30'12.1"N 128°46'26.5"E	-	RNAV 1	-
002	TF	TGU	-	343 (334.0)	20.4	-	+9 000	-	35°48'35.4"N 128°35'26.8"E	-	RNAV 1	-
003	TF	YAWAN	-	299 (290.2)	11.1	-	+6 000	-230	35°52'24.8"N 128°22'38.0"E	-	RNAV 1	IAF

RNAV YAWAN 1 - LAPAL Transition

Serial Number	Path Descriptor	Waypoint Identifier	Fly-over	Course/Track °M(°T)	Distance (NM)	Turn Direction	Altitude (ft)	Speed (kt)	Coordinates	VPA/ RDH	Navigation Specification	Remarks
001	IF	LAPAL	-	-	-	-	-	-	35°54'12.6"N 129°04'52.0"E	-	RNAV 1	-
002	TF	TGU	-	266 (256.9)	24.6	-	+9 000	-	35°48'35.4"N 128°35'26.8"E	-	RNAV 1	-
003	TF	YAWAN	-	299 (290.2)	11.1	-	+6 000	-230	35°52'24.8"N 128°22'38.0"E	-	RNAV 1	IAF

INTENTIONALLY

LEFT

BLANK

STANDARD ARRIVAL CHART
INSTRUMENT(STAR)TRANSITION ALT 14 000
TRANSITION LVL FL 140DAEGU APP 135.9 346.3
DAEGU TWR 126.2 236.6
365.0DAEGU/Daegu Intl(RKTN)
RWY 31L/R
RNAV UKBAT 1

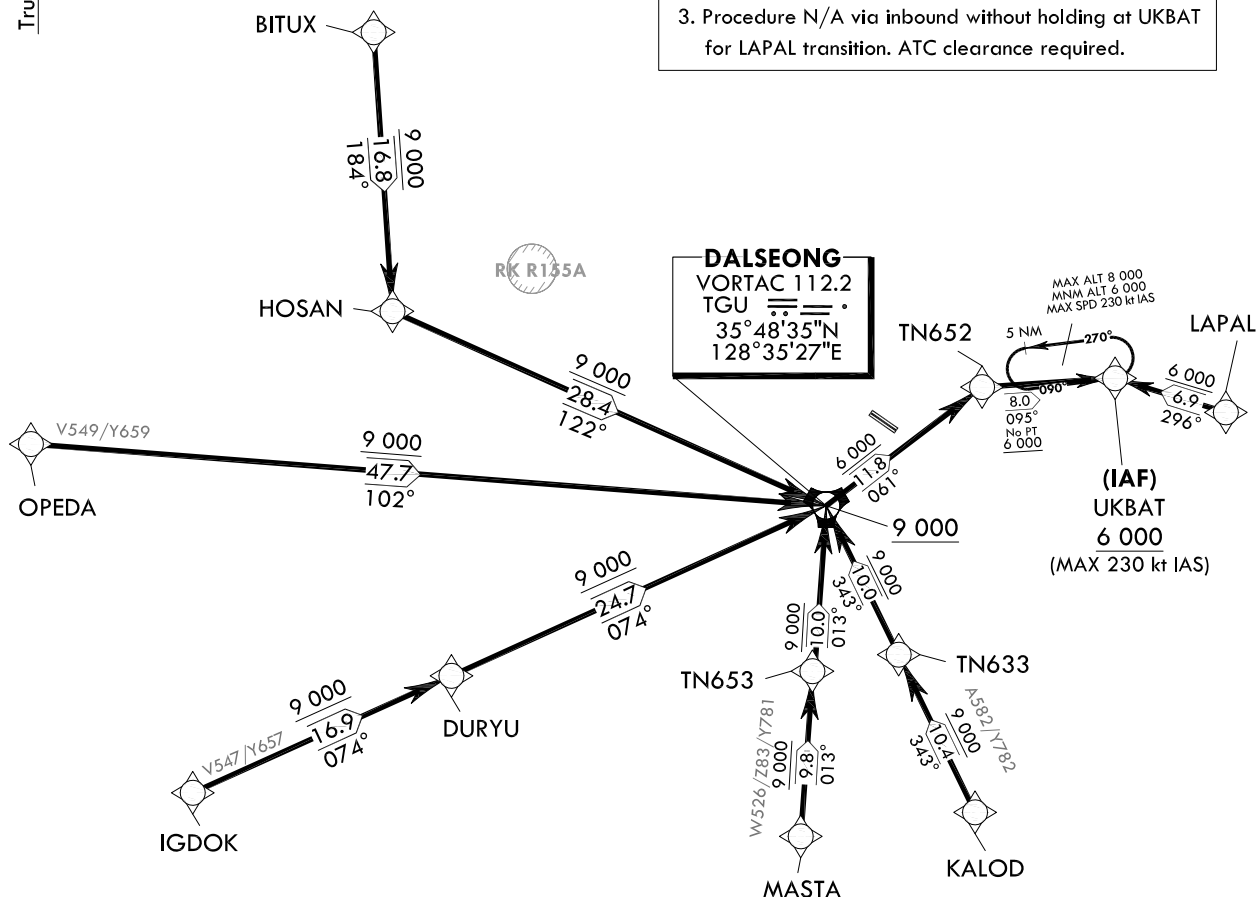
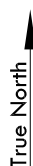
Note : Arrival under U.S. TERPS.

ELEV, ALT IN FEET

DIST IN NM

BRG ARE MAG

VAR 9° W



NOT TO SCALE

ARRIVAL ROUTE DESCRIPTION

LANDING RUNWAY 31L/R : Expect RNP approach following transition routes.

The following are transition routes.

BITUX Transition : From BITUX on track 184° to HOSAN and track 122° to cross TGU(VORTAC) at or above 9 000 ft, then on track 061° to TN652 and track 095° to cross UKBAT at or above 6 000 ft.OPEDA Transition : From OPEDA on track 102° to cross TGU(VORTAC) at or above 9 000 ft, then on track 061° to TN652 and track 095° to cross UKBAT at or above 6 000 ft.IGDOK Transition : From IGDOK on track 074° to DURYU and track 074° to cross TGU(VORTAC) at or above 9 000 ft, then on track 061° to TN652 and track 095° to cross UKBAT at or above 6 000 ft.MASTA Transition : From MASTA on track 013° to TN653 and track 013° to cross TGU(VORTAC) at or above 9 000 ft, then on track 061° to TN652 and track 095° to cross UKBAT at or above 6 000 ft.KALOD Transition : From KALOD on track 343° to TN633 and track 343° to cross TGU(VORTAC) at or above 9 000 ft, then on track 061° to TN652 and track 095° to cross UKBAT at or above 6 000 ft.LAPAL Transition : From LAPAL on track 296° to cross UKBAT at or above 6 000 ft.

Change : Establishment of standard instrument arrival procedure for RWY 31L/R.

DAEGU/Daegu Intl(RKTN)
RWY 31L/R
RNAV UKBAT 1

AERONAUTICAL DATA TABULATION

Standard Instrument Arrival Procedure Coding Tables

RNAV UKBAT 1 - BITUX Transition

Serial Number	Path Descriptor	Waypoint Identifier	Fly-over	Course/Track °M(°T)	Distance (NM)	Turn Direction	Altitude (ft)	Speed (kt)	Coordinates	VPA/RDH	Navigation Specification	Remarks
001	IF	BITUX	-	-	-	-	-	-	36°16'44.9"N 128°01'47.9"E	-	RNAV 1	-
002	TF	HOSAN	-	184 (175.5)	16.8	-	+9 000	-	36°00'00.7"N 128°03'25.6"E	-	RNAV 1	-
003	TF	TGU	-	122 (113.5)	28.4	-	+9 000	-	35°48'35.4"N 128°35'26.8"E	-	RNAV 1	-
004	TF	TN652	-	061 (052.7)	11.8	-	+6 000	-	35°55'43.2"N 128°46'57.0"E	-	RNAV 1	-
005	TF	UKBAT	-	095 (086.0)	8.0	-	+6 000	-230	35°56'16.5"N 128°56'47.1"E	-	RNAV 1	IAF

RNAV UKBAT 1 - OPEDA Transition

Serial Number	Path Descriptor	Waypoint Identifier	Fly-over	Course/Track °M(°T)	Distance (NM)	Turn Direction	Altitude (ft)	Speed (kt)	Coordinates	VPA/RDH	Navigation Specification	Remarks
001	IF	OPEDA	-	-	-	-	-	-	35°51'48.5"N 127°36'52.0"E	-	RNAV 1	-
002	TF	TGU	-	102 (093.6)	47.7	-	+9 000	-	35°48'35.4"N 128°35'26.8"E	-	RNAV 1	-
003	TF	TN652	-	061 (052.7)	11.8	-	+6 000	-	35°55'43.2"N 128°46'57.0"E	-	RNAV 1	-
004	TF	UKBAT	-	095 (086.0)	8.0	-	+6 000	-230	35°56'16.5"N 128°56'47.1"E	-	RNAV 1	IAF

RNAV UKBAT 1 - IGDKOK Transition

Serial Number	Path Descriptor	Waypoint Identifier	Fly-over	Course/Track °M(°T)	Distance (NM)	Turn Direction	Altitude (ft)	Speed (kt)	Coordinates	VPA/RDH	Navigation Specification	Remarks
001	IF	IGDKOK	-	-	-	-	-	-	35°31'03.6"N 127°49'06.6"E	-	RNAV 1	-
002	TF	DURYU	-	074 (064.9)	16.9	-	+9 000	-	35°38'13.0"N 128°07'54.2"E	-	RNAV 1	-
003	TF	TGU	-	074 (065.1)	24.7	-	+9 000	-	35°48'35.4"N 128°35'26.8"E	-	RNAV 1	-
004	TF	TN652	-	061 (052.7)	11.8	-	+6 000	-	35°55'43.2"N 128°46'57.0"E	-	RNAV 1	-
005	TF	UKBAT	-	095 (086.0)	8.0	-	+6 000	-230	35°56'16.5"N 128°56'47.1"E	-	RNAV 1	IAF

Change : Establishment of standard instrument arrival procedure for RWY 31L/R.

DAEGU/Daegu Intl(RKTN)
RWY 31L/R
RNAV UKBAT 1

AERONAUTICAL DATA TABULATION

Standard Instrument Arrival Procedure Coding Tables

RNAV UKBAT 1 - MASTA Transition

Serial Number	Path Descriptor	Waypoint Identifier	Fly-over	Course/Track °M(°T)	Distance (NM)	Turn Direction	Altitude (ft)	Speed (kt)	Coordinates	VPA/RDH	Navigation Specification	Remarks
001	IF	MASTA	-	-	-	-	-	-	35°28'47.0"N 128°33'39.6"E	-	RNAV 1	-
002	TF	TN653	-	013 (004.2)	9.8	-	+9 000	-	35°38'36.1"N 128°34'32.6"E	-	RNAV 1	-
003	TF	TGU	-	013 (004.2)	10.0	-	+9 000	-	35°48'35.4"N 128°35'26.8"E	-	RNAV 1	-
004	TF	TN652	-	061 (052.7)	11.8	-	+6 000	-	35°55'43.2"N 128°46'57.0"E	-	RNAV 1	-
005	TF	UKBAT	-	095 (086.0)	8.0	-	+6 000	-230	35°56'16.5"N 128°56'47.1"E	-	RNAV 1	IAF

RNAV UKBAT 1 - KALOD Transition

Serial Number	Path Descriptor	Waypoint Identifier	Fly-over	Course/Track °M(°T)	Distance (NM)	Turn Direction	Altitude (ft)	Speed (kt)	Coordinates	VPA/RDH	Navigation Specification	Remarks
001	IF	KALOD	-	-	-	-	-	-	35°30'12.1"N 128°46'26.5"E	-	RNAV 1	-
002	TF	TN633	-	343 (334.0)	10.4	-	+9 000	-	35°39'35.5"N 128°40'50.3"E	-	RNAV 1	-
003	TF	TGU	-	343 (334.0)	10.0	-	+9 000	-	35°48'35.4"N 128°35'26.8"E	-	RNAV 1	-
004	TF	TN652	-	061 (052.7)	11.8	-	+6 000	-	35°55'43.2"N 128°46'57.0"E	-	RNAV 1	-
005	TF	UKBAT	-	095 (086.0)	8.0	-	+6 000	-230	35°56'16.5"N 128°56'47.1"E	-	RNAV 1	IAF

RNAV UKBAT 1 - LAPAL Transition

Serial Number	Path Descriptor	Waypoint Identifier	Fly-over	Course/Track °M(°T)	Distance (NM)	Turn Direction	Altitude (ft)	Speed (kt)	Coordinates	VPA/RDH	Navigation Specification	Remarks
001	IF	LAPAL	-	-	-	-	-	-	35°54'12.6"N 129°04'52.0"E	-	RNAV 1	-
002	TF	UKBAT	-	296 (287.5)	6.9	-	+6 000	-230	35°56'16.5"N 128°56'47.1"E	-	RNAV 1	IAF

HOLDING PROCEDURE

Holding Identification	Path Descriptor	Waypoint Identifier	Fly-over	Course/Track °M(°T)	Distance (NM)	Turn Direction	Altitude (ft)	Speed (kt)	Coordinates	VPA/TCH	Navigation Specification	Remarks
RNAV UKBAT 1	HM	UKBAT	-	090 (081.28)	5.0	L	-8 000 +6 000	-230	35°56'16.5"N 128°56'47.1"E	-	RNAV 1	-

Change : Establishment of standard instrument arrival procedure for RWY 31L/R.

INTENTIONALLY

LEFT

BLANK